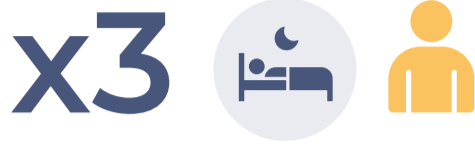
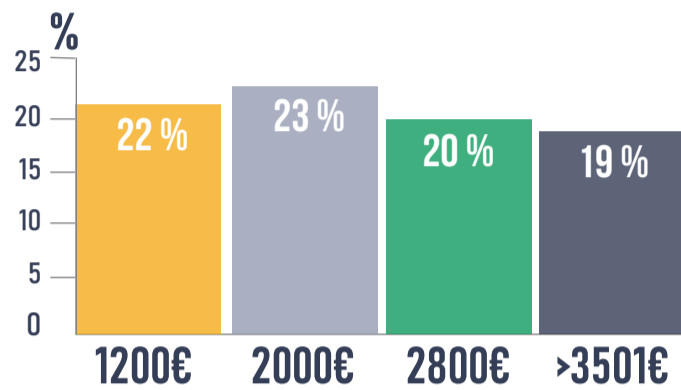


## ONLINE SURVEYS (FREQUENT TRAVELLERS) / 2538 EU CITIZENS

### N° OVERNIGHT TRIPS PER YEAR



### NET MONTHLY INCOME

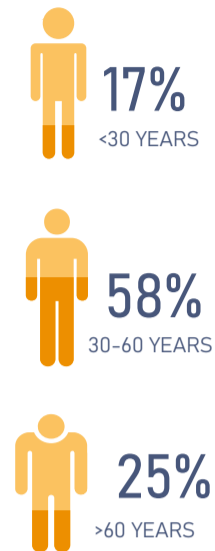


### SOCIO-DEMOGRAPHIC CHARACTERISTICS

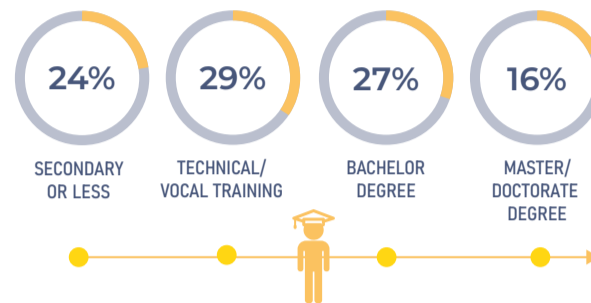
#### GENDER



#### AGE



#### EDUCATION LEVEL

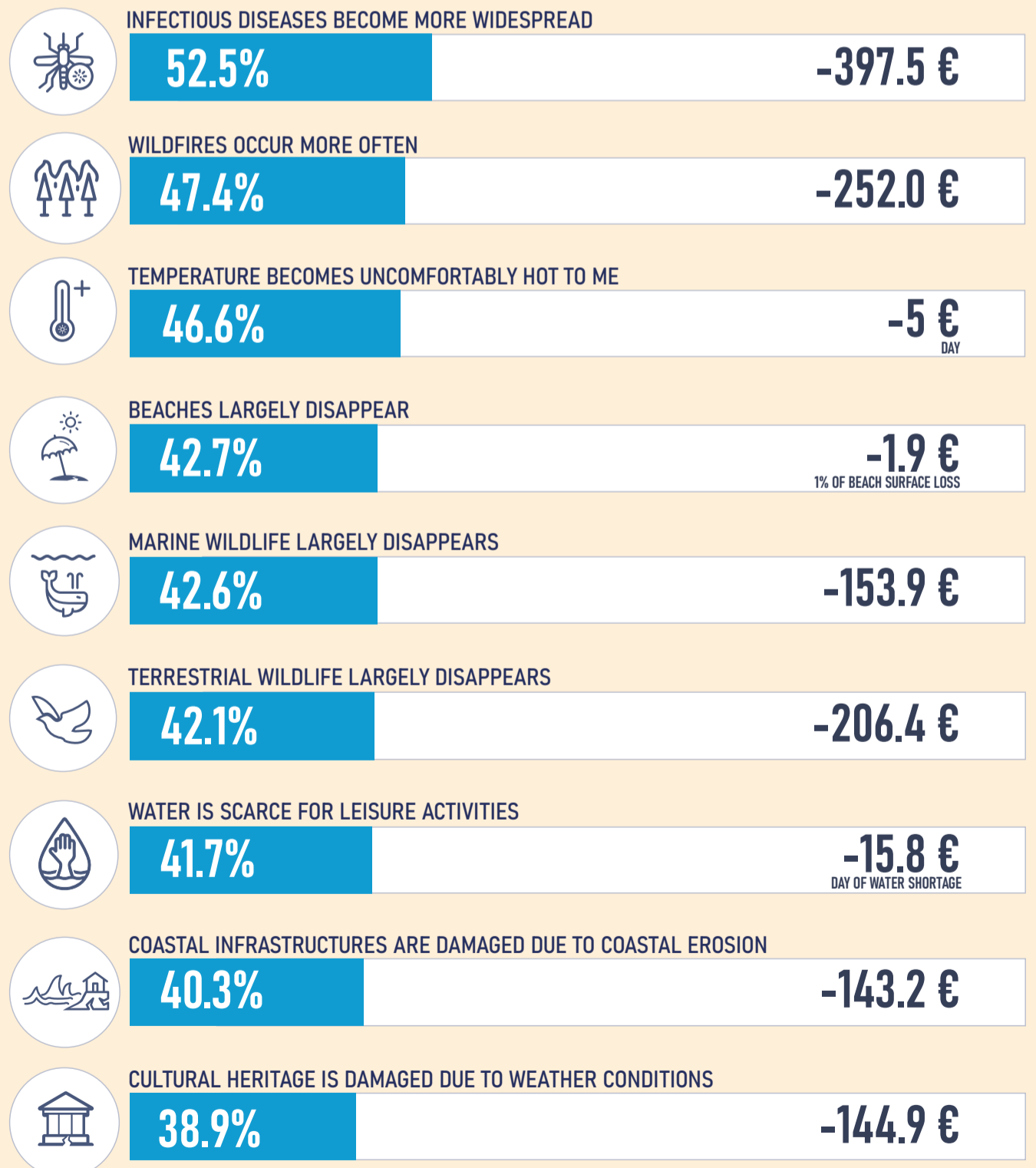


### RANKING ISLANDS DESTINATIONS' IMAGE

THIS RANKING IS BASED ON TOURISTS' CURRENT VALUATION OF THE ISLANDS



### TOURISTS' DISPOSITION TO STAY AT HOME AND WILLINGNESS TO PAY FOR VISITING ISLANDS POTENTIALLY AFFECTED BY CLIMATE CHANGE



WOULD STAY AT HOME

MONETARY VALUES REPRESENT A DECREASE IN TOURISTS' WILLINGNESS TO PAY FOR THEIR HOLIDAYS AT ISLAND DESTINATIONS IF THE IMPACT OCCURS THERE IN THE FUTURE (av. decrease by tourist for a holiday package of 5 nights)